

NURSERY

A nursery facility is available for children over 6 months whose parents are taking the course. The nursery is within the shimin center.

Location: Yagiyama Shimin Center

Requirements: Children over 6 months whose parents are taking one of the language courses.

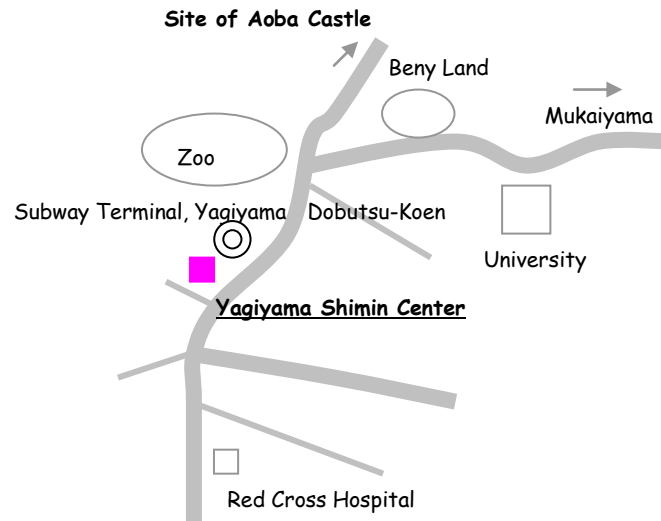
Capacity: 18 children

Fees: Free

The nursery is subsidized.



LOCATION



Take Sendai Subway Tozai Line and get off at Yagiyama Dobutsu-Koen. Take the exit W-1 for the Yagiyama Shimin Center.

★Free parking is available.

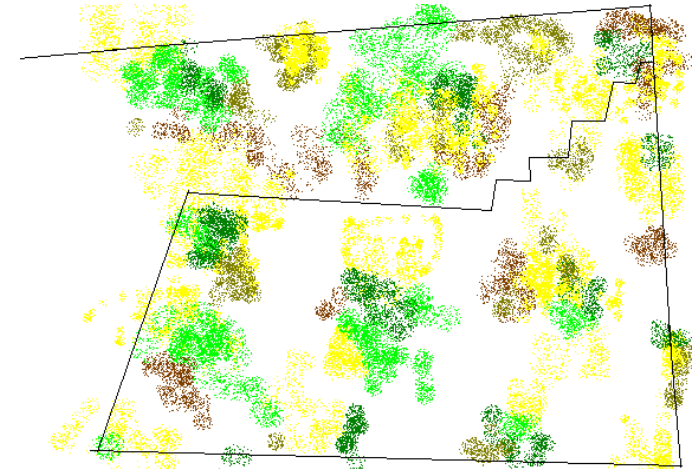
CONTACT DETAILS

Address: Yagiyama Shimin Center
1-43 Yagiyama Honcho
Taihaku-ku

Phone: (022) 228-1190

E-mail: yagiyama-siminc@hm-sendai.jp

FREE! JAPANESE CLASSES



Survival Japanese: beginner, intermediate, and up. Classes are held at Yagiyama Shimin Center, and are taught by volunteer teachers. A wide range of class levels are available. Please see inside or contact the organizer for more details.

“Japanese Learners’ Room”



The “Japanese Learners’ Room” language classes have been running since 1990 and are sponsored by Sendai Tourism, Convention and International Association (SenTIA) and Yagiyama Shimin Center. The classes are taught by experienced volunteer teachers.

The “Japanese Learners’ Room” language classes are provided in order to help foreign residents of Sendai to acquire Japanese language skills for daily life. Classes are held twice weekly, on Wednesdays and Fridays, from 10:00 to 11:30 am.

A number of classes are run simultaneously, at various levels:

Beginner
Post-Beginner
Intermediate
Post-Intermediate

Students are to provide their own textbooks (approximate cost 2,500 yen).

Additional activities are organized throughout the year, including a field trip, parties, a bazaar, and several Japanese traditional events.



Trip to Mt. Zao

It is possible to join the classes at any time, so please contact Yagiyama Shimin Center on 228-1190 for more information, or just drop in to observe a class. We look forward to seeing you soon!